



ARMANI / CASA

R E S I D E N C E S

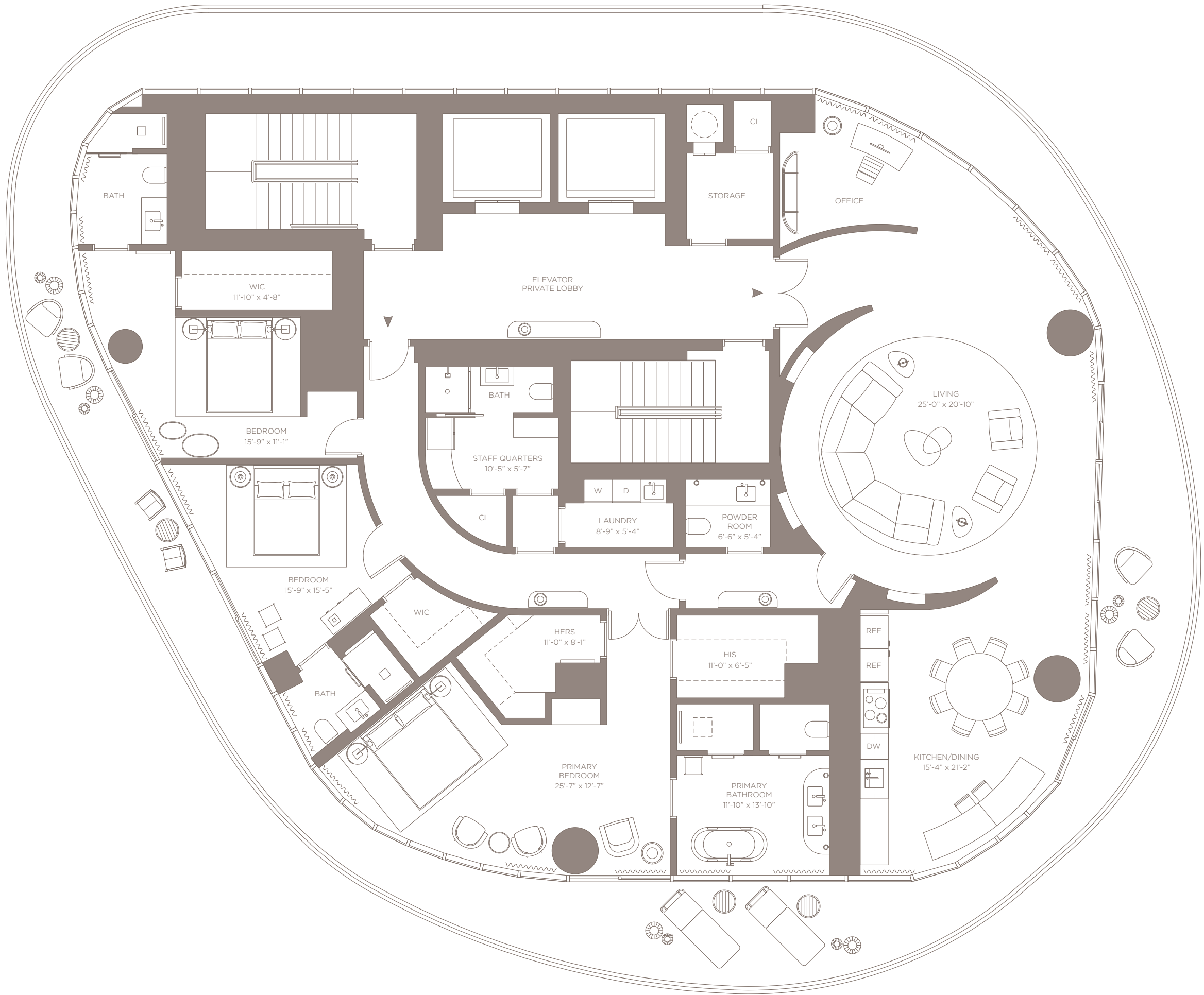
P O M P A N O B E A C H

FLOOR PLAN

EAST RESIDENCE



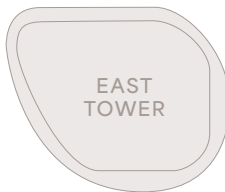
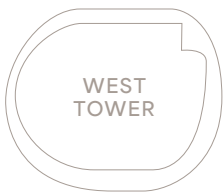
A NEW LUXURY LANDMARK IN POMPANO BEACH



BALCONY A LEVELS 05, 11 & 15

3 BEDROOMS	INTERIOR	EXTERIOR	TOTAL
4.5 BATHROOMS	3,533 SQ. FT.	1,523 SQ. FT.	5,056 SQ. FT.

EAST RESIDENCE



WE ARE PLEDGED TO THE LETTER AND SPIRIT OF THE U.S. POLICY FOR ACHIEVEMENT OF EQUAL HOUSING OPPORTUNITY THROUGHOUT THE NATION. WE ENCOURAGE AND SUPPORT AN AFFIRMATIVE ADVERTISING AND MARKETING PROGRAM IN WHICH THERE ARE NO BARRIERS TO OBTAINING HOUSING BECAUSE OF RACE, COLOR, RELIGION, SEX, HANDICAP, FAMILIAL STATUS OR NATIONAL ORIGIN. This is not intended to be an offer to sell, or solicitation to buy, condominium units to residents of any jurisdiction where prohibited by law, and your eligibility for purchase will depend upon your state of residency. This offering is made only by the prospectus for the condominium and no statement should be relied upon if not made in the prospectus. The sketches, renderings, graphic materials, plans, specifications, terms, conditions, and statements contained in this brochure are proposed only, and the Developer reserves the right to modify, revise, or withdraw any or all of same in its sole discretion and without prior notice. All improvements, designs, and construction are subject to first obtaining the appropriate federal, state and local permits and approvals for same. These drawings and depictions are conceptual only and are for the convenience of reference and including the artist's renderings. They should not be relied upon as representations, express or implied, of the final details of the residences or the Condominium. The developer expressly reserves the right to make modifications, revisions, and changes it deems desirable in its sole and absolute discretion. All depictions of appliances, counters, soffits, floor coverings, and other matters of detail, including, without limitation, items of finish and decoration, are conceptual only and are not necessarily included in each Unit. The photographs contained in this brochure may be stock photography or have been taken off-site and are used to depict the spirit of the lifestyles to be achieved rather than any that may exist or that may be proposed, and are merely intended as illustrations of the activities and concepts depicted therein. Consult your Agreement and the Prospectus for the items included with the Unit. Dimensions and square footage are approximate and may vary with actual construction. The project graphics, renderings, and text provided herein are copyrighted works owned by the developer. All rights reserved. Unauthorized reproduction, display, or other dissemination of such materials is strictly prohibited and constitutes copyright infringement. No real estate broker is authorized to make any representations or other statements regarding the projects, and no agreements with, deposits paid to, or other arrangements made with any real estate broker are or shall be binding on the developer. All prices are subject to change at any time and without notice and do not include optional features or premiums for upgraded units. From time to time, price changes may have occurred that are not yet reflected on this brochure. Please check with the sales center for the most current pricing.

ARMANI/CASA RESIDENCES
POMPANO BEACH

PROPERTY ADDRESS

1550 N. OCEAN BLVD
POMPANO BEACH, FLORIDA 33062

DEVELOPED BY

SP DEVELOPMENTS | GCF DEVELOPMENT
VERTICAL DEVELOPMENTS | WELLDUÑO